

CAPPADOCIA CUP 2011 BULLETIN 3

Event Information

Cappadocia Cup 2011 will be held during March 25-27, 2011 in the Göreme and Mustafapaşa regions of Nevşehir. We are happy to welcome competitors from different countries for the first-ever orienteering event in this unique region. You will enjoy a very challenging terrain which may be termed a "stone forest" with its unique rock pillars, termed "fairy chimneys" (peri bacaları) in Turkish. Not only will the event offer a three day fulfilling orienteering, but will also give you the chance of sightseeing in this infamous region with its underground cities and ancient places of worship.

Organizer: Turkish Orienteering Federation

Event Director: Osman FİLİZ

IOF Event Adviser: Yüksel Kösem

Event Controller: Selmi ÇAKIR

Course Planners: Ömer FURKAN, Elvan İLBOĞA

Mappers: Ales Hejna, Jan Drbal, Jiri Danek, 2010

Jury Members: Tatiana KALENDEROĞLU- Turkish Orienteering Federation
Nermin Fenmen - Turkish Orienteering Federation
Fatih ÖZDEMİR - Turkish Orienteering Federation

Venue: Göreme – Mustafapaşa, Nevşehir

Event (Competition) Center: Göreme Municipality of Meeting Room

Contact person: Fatih ÖZDEMİR- +90 533 770 9786

Working Hours for the Competition Center:

March 24 14:00 – 20:00

March 25 09:00 – 12:00

March 26 09:00 – 12:00

Competition Schedule

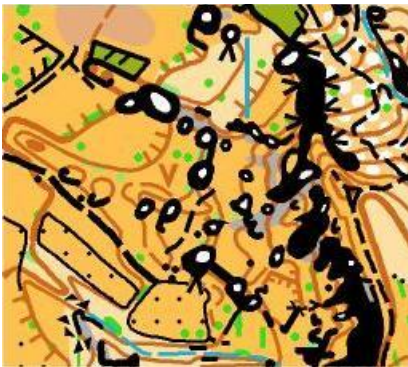
24.03.2011	Check-In & Registrations	
25.03.2011	Sprint, Muratpaşa	First start @ 14:00
26.03.2011	Middle Distance	First start @ 11:00
27.03.2011	Middle Distance (WRE), Prize Giving Ceremony	First start @ 10:00

Maps

Maps have been drawn according to the International Specification for Orienteering Maps (ISOM 2000) and the International Specification for Sprint Orienteering Maps (ISSOM 2007).

Maps will be handed out in a waterproof plastic bags. Control descriptions will be printed on the map and will be available at start areas as well.

Special features: The unique rock pillars of the region have been mapped as a black impassable wall with a white dot in the centre.



Start Times

Will be announced on March 22, on the official website of the Turkish Orienteering Federation www.orienteering.org.tr

Results

Will be available on the web page www.orienteering.org.tr at the end of each day.

Transportation

Shuttle busses for transportation to the competition sites from Nevşehir city center, Ürgüp, Göreme and Mustafapaşa will be available free of charge. The hours of departure will be as follows:

1st day – Sprint: From Nevşehir, Ürgüp, Göreme to Mustafapaşa departs at 12:00

2nd day – Middle Distance: From Nevşehir, Ürgüp, Göreme to Mustafapaşa departs at 09:30

3rd day – Middle Distance (WRE): From Nevşehir, Ürgüp, Mustafapaşa to Göreme departs at 08:30

Classes

W: Women, M: Men, CL: Course Length (km), CN: Number of Controls, C: Climb (m)

Class	Year Born	Stage 1			Stage 2			Stage 3		
		CL	CN	C	CL	CN	C	CL	CN	C
W10	2001	1.2	10	20	2.1	13	60	2.0	15	40
W12	1999-2000	1.4	10	30	2.6	15	75	2.5	17	70
W14	1997-1998	1.4	13	65	3.1	1	100	3.0	17	65
W16	1995-1996	1.7	12	35	3.6	15	135	3.5	17	75
W18	1993-1994	1.9	12	95	4.3	18	175	4.2	20	75
W20	1991-1992	2.2	14	105	4.7	17	195	4.7	19	80
W21	-1990	2.2	16	110	5.3	16	180	5.1	18	90
W21E	-1990	2.3	14	130	5.4	19	215	5.2	21	105
W35	-1976	2.0	12	95	4.1	17	135	4.0	19	100
W40	-1971	2.0	13	75	4.1	18	125	4.0	18	85
W45	-1966	1.8	12	55	3.6	17	115	3.5	17	75
W50	-1961	1.8	13	40	3.1	15	105	3.0	17	75
W55	-1956	1.6	12	35	2.8	15	90	2.7	16	65
W60	-1951	1.6	12	35	2.8	15	90	2.7	16	65
W65	-1946	1.4	12	35	2.5	15	60	2.5	17	50
W70+	-1941	1.4	12	35	2.5	15	55	2.5	16	55
W open		1.5	13	35	2.5	16	50	2.5	17	45

W: Women, M: Men, CL: Course Length (km), CN: Number of Controls, C: Climb (m)

Class	Year Born	Stage 1			Stage 2			Stage 3		
		CL	CN	C	CL	CN	C	CL	CN	C
M10	2001	1.2	10	20	2.1	14	65	2.2	16	60
M12	1999-2000	1.4	13	45	2.9	15	90	2.8	15	85
M14	1997-1998	1.6	14	35	3.6	16	105	3.5	18	70
M16	1995-1996	1.8	13	45	4.4	17	145	4.3	19	90
M18	1993-1994	2.1	13	85	4.8	18	165	4.7	17	100
M20	1991-1992	2.4	15	90	5.3	19	205	5.2	18	105
M21	-1990	2.4	19	125	6.1	18	220	6.0	20	110
M21E	-1990	2.6	18	135	6.7	18	250	6.5	20	125
M35	-1976	2.3	15	80	5.1	18	145	5.0	18	95
M40	-1971	2.3	13	65	4.6	18	115	4.5	17	60
M45	-1966	2.1	14	65	4.1	16	120	4.0	17	70
M50	-1961	2.1	12	40	3.6	15	90	3.5	16	65
M55	-1956	1.8	12	35	3.3	16	100	3.2	16	55
M60	-1951	1.8	12	35	3.3	16	100	3.2	16	55
M65	-1946	1.5	12	35	3.0	16	70	3.0	16	60
M70 +	-1941	1.5	12	35	3.0	15	65	3.0	15	65
M open		1.5	13	35	3.0	16	60	3.0	16	45

* The organizer reserves the right to change the course lengths and number of control points.

Technical Information



March 25, 2011 Friday - Sprint

First start at 14:00

Shuttle busses leave Nevşehir, Ürgüp, Göreme for Mustafapaşa at 12:00

Assembly area, Start and Finish in Mustafapaşa city center

Course mostly within the urban areas. Sports shoes are advised. Although being controlled, beware of vehicle traffic within the town center.



Map scale 1 : 4000, Contour interval 2.5 m



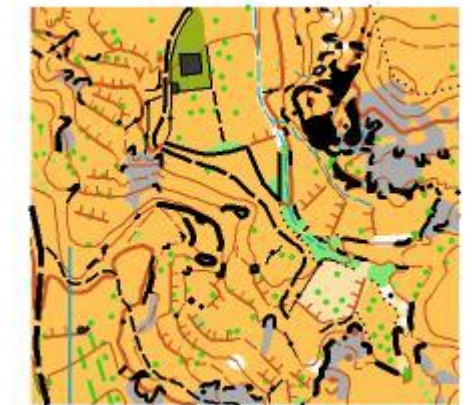
March 26, 2011 Saturday – Middle Distance

First start at 11:00

Shuttle busses leave Nevşehir, Ürgüp, Göreme for Mustafapaşa at 09:30

Assembly area, Start and Finish in Mustafapaşa city center

Course mostly within the surroundings of Mustafapaşa. Studded orienteering shoes or sports shoes may be used. Although being controlled, beware of vehicle traffic within the town center.



Map scale 1:7 000, Contour interval 5 m



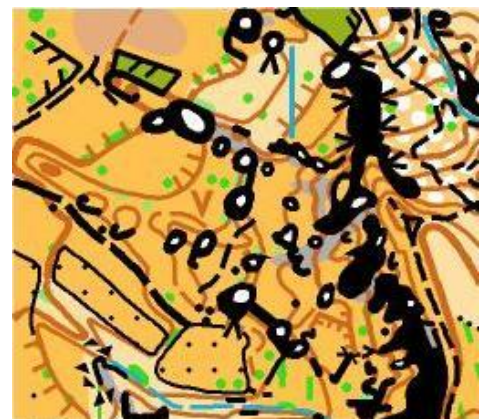
March 27, 2011 Sunday – Middle Distance (WRE)

First start at 10:00

Shuttle busses leave Nevşehir, Ürgüp, Mustafapaşa for Göreme at 08:30

Assembly area, Start and Finish in the Göreme city center

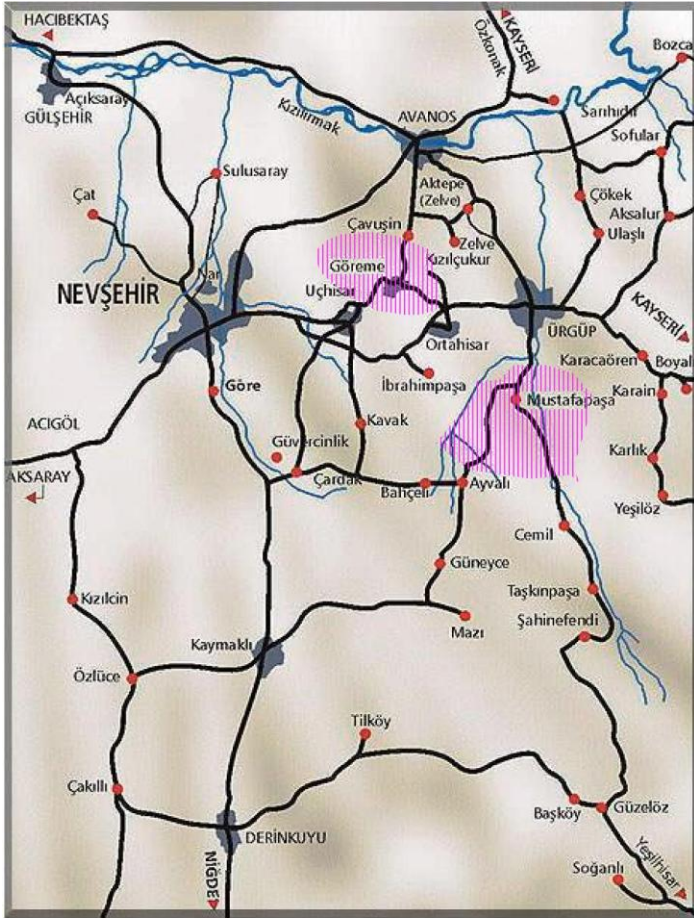
Course mostly within the surroundings of Göreme. Studded orienteering shoes or sports shoes may be used. Although being controlled, beware of vehicle traffic within the town center.



Map scale 1:10 000, Contour interval 5 m

Embargoed Areas

The regions marked on the map are embargoed until the end of the event.



Awards

The results of the Cappadocia Cup will be evaluated as the sum of times for all three days. The first three in each category will be awarded medals and surprise prizes from our sponsors. Medals for the first three in the W21E and M21E classes for the WRE will be awarded also.

Social events

Opening cocktail for team leaders: March 26 at 16:30, Muratpaşa

Accommodation

Various means of accommodation are available in the region. A few are given below. You may also contact Aydın AYGÜN aydin@eontours.com +90 532 237 1396 and Ali Dede COŞKUNER anahita@anahitatravel.com +90 532 374 0459 for hotel reservations and booking tours within the region.

HOTEL GREEN CAMPING Çavuşin Avanos Cappadocia TURKEY Tel: +90 384 532 70 50 Fax +90 384 532 70 32 www.motelgreen.com info@motelgreen.com	HOTEL SAFIR KAPADOKYA Yeni Mah.Damat İbrahim Paşa Bul. No:27 (Türk Telekom Karşısı) Merkez/NEVŞEHİR Tel: +90 384 214 35 45 - +90 213 50 55 http://www.otelsafir.com info@otelsafir.com	DINLER HOLIDAY VILLAGE - NEVSEHIR Nevşehir - Urgup Main Road 2nd km, 50100 / Nevşehir Tel: +90 384 213 9968 Fax: +90 384 213 9969 nevsehir@dinler.com http://www.dinler.com/nevsehir/contact.php
SOFA HOTEL Avanos, Cappadocia, Turkey Orta Mahalle Gedik Sokak No 9 Tel.+90 384 511 5186 Fax +90 384 511 4489 http://www.sofa-hotel.com info@sofa-hotel.com	ÇİNER HOTEL Göreme/Nevşehir/Türkiye Tel +90 384 271 2515 Fax:+90 384 271 2304 http://www.cinerhotel.com ciner@cinerhotel.com	CCR Tekelli Mah. Goreme Cad. Divanlı Sokak No: 83 Uçhisar - NEVŞEHİR Tel +90 384 219 3194 Fax:+90 384 219 3197 http://www.ccr-hotels.com info@ccr-hotels.com
BÜYÜK AVANOS HOTELİ AVANOS NEVŞEHİR Tel. +90 384 511 3577 Fax +90 384 511 4863 http://cappadociaavanoshotel.net hotel@buyukavanos.com	DEDEMAN-KAPADOKYA Urgup Yolu 2. km 50200 Nevşehir, Turkey Tel:+90 384 213 9900 Faks:+90 384 213 2158 http://www.dedeman.com kapadokya@dedeman.com	ARGOS IN CAPPADOCIA Uçhisar 50240 Nevşehir Tel +90 384 219 3130 Fax:+90 384 219 2055 http://www.argosincappadocia.com aic@argos.com.tr

Entries

Normal entries will be accepted up to **March 20**. The date of money wire will be taken into consideration for early registrants. Late entries will be accepted until **March 24**.

Fees

Class	- March 20, 2011	Late Entries
Children Classes 10-14 (M/W)	Free of charge	Free of charge
16+ (M/W)	€ 40 (3 stages total) € 15 (daily entry)	€ 50 (3 stages total) € 20 (daily entry)

Payments shall be sent to this account:

Account Holder: Turkish Orienteering Federation

Address: Ulus İşhanı, A blok, Kat:4, Ulus-ANKARA-TURKEY

Currency: Euro

Bank & Branch: TC GARANTİ BANKASI, ANAFARTALAR Branch **Account Number: 711/9091356**

IBAN: TR51 0006 2000 7110 0009 0913 56

SWIFT: TGBATRIS