



**6<sup>th</sup> Mediterranean Championships in  
Orienteering  
22 - 26 FEBRUARY 2017 ANTALYA**

**In conjunction with Antalya 0 Days**

**BULLETIN 1**

**ORGANISING COMMITTEE:**  
**on behalf of the Turkish Orienteering Federation**

Event Director:  
Event Secretary:

Umut Başoğlu  
Sena Otlu

**IOF EVENT ADVISER** : Yüksel Kösem

## I. VENUE:

Antalya O Days 2017 will take place in Central Antalya. The beautiful forests will be hosting the middle distance and long distance competitions. The sprint competition will take place in Old City, where route choices will challenge your ability to make rapid decisions.



## PROGRAMME

February 22, Arrival and registrations

### **Day 1**

February 23, Thursday, Registration  
Antalya O Days, Stage 1, Middle distance Kumköy

### **Day 2**

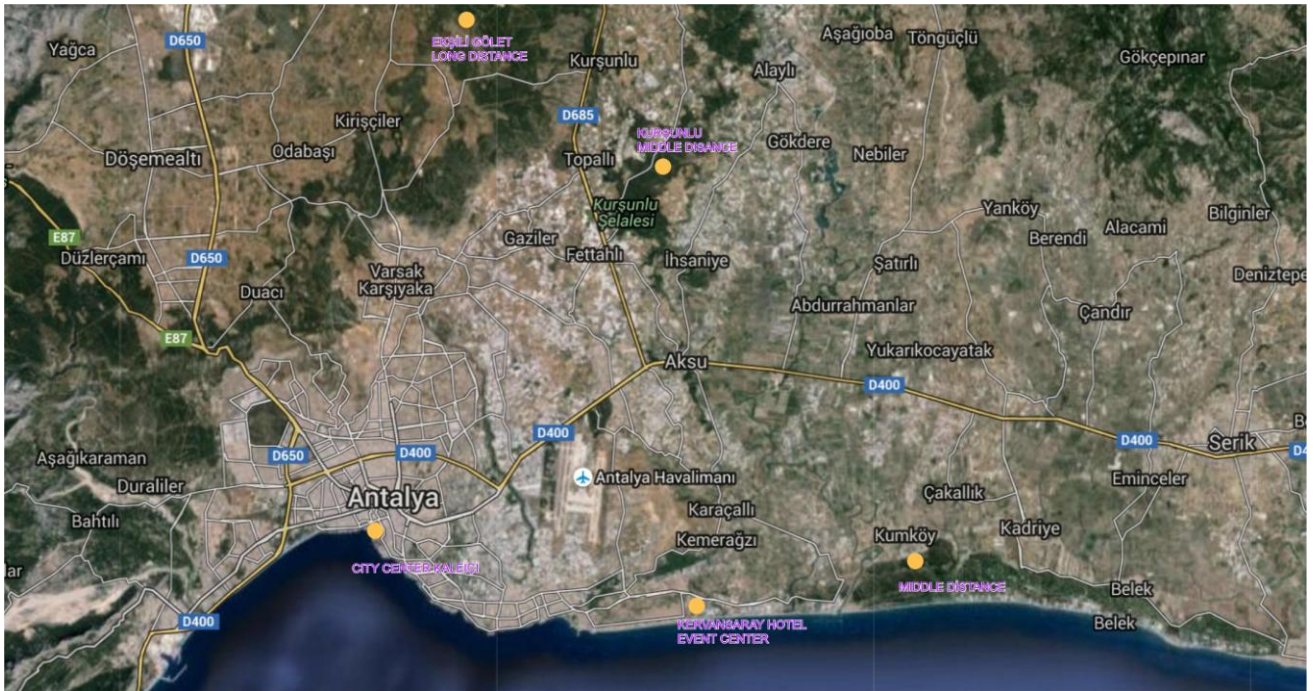
February 24, Friday, **1<sup>st</sup> day of MCO**, Application for WRE will be made  
Antalya O Days, Stage 2, Middle distance  
Opening Ceremony, Award Ceremony for 1<sup>st</sup> day of MCO and WRE

### **Day 3**

February 25, Saturday, **2nd day of MCO**; Application for WRE will be made  
Antalya O Days, Stage 3, Long Distance Ekşili Gölet  
Award Ceremony for 2nd day of MCO and WRE and 1st stage of Turkish Championships

### **Day 4**

February 26, Sunday, **3rd day of MCO**, Application for WRE will be made  
Antalya O Days, Stage 4, Sprint Old City, Kaleiçi  
Award Ceremony for 3<sup>rd</sup> day of MCO and WRE, MCO Country standings, Antalya O Days overall and 2nd stage of Turkish Championships



## MCO CLASSES

Every country will be represented by a team composed of four women and four men.

SENIOR: 2 WOMEN and 2 MEN, Women and Men Elite

JUNIOR: 2 WOMEN and 2 MEN, W20, M20

A country will be in the classification when it has a runner in the event.

## ANTALYA O DAYS CLASSES

M/W 10, 12, 14, 16A, 16B, 18A, 18B, 20A, 10B, 21A, 21E, 35, 40, 45, 50, 55, 60, 65, 70+, Open

\* The organizer reserves the right to combine classes according to IOF rules if there are fewer participants than 5 in a class.

### Entry fees:

Classes M/W 10, 12: free of charge.

All other classes: 15 € per day, 50 € for all 4 days.

## ENTRIES

Entries will be available on our website starting from August 2016.

Registrations for Antalya O Days will be made via the website for the Turkish Orienteering Federation at [www.orienteering.org.tr](http://www.orienteering.org.tr)

Please click official site for MCO [preliminary entry form](#)

The deadline for entries for MCO is 1st of February 2017.

Entry is free of charge for official MCO competitors.

## AWARDS

MCO awards: Medals for the 1<sup>st</sup> to 3<sup>rd</sup> and diplomas for the 1<sup>st</sup> to the 5<sup>th</sup> classified, for each competition.

WRE awards: Medals for the 1<sup>st</sup> to 3<sup>rd</sup>

Antalya O Days awards: Medals for the 1<sup>st</sup> to 3<sup>rd</sup> in each class, based on the overall standing after all 4 days.

Prize-giving will be after each competition or the following day

## EVENT CENTER

Kervansaray Lara Hotel.

Double room price 40€ per person. Full board, all inclusive except alcohol.

Facilities for meetings.

For persons staying elsewhere, visit for 1 hour is free, otherwise a daily entry fee of 25€ will be charged.

Other accommodation: Grand Lara Park Hotel

Double room 31€ per person. 1,5km distance from the Event Center. Full board, all inclusive except alcohol.

## PUNCHING SYSTEM

**SPORT Ident** electronic punching system will be used in all races. You can rent an SI card from the organizers for 3 EUR per start, or 10€ for all 4 days. The fee for a lost rented SI card is 40 EUR. SI Card numbers should be stated in the Event Entry Form.

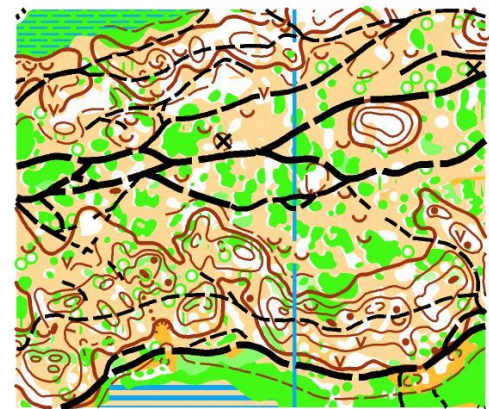
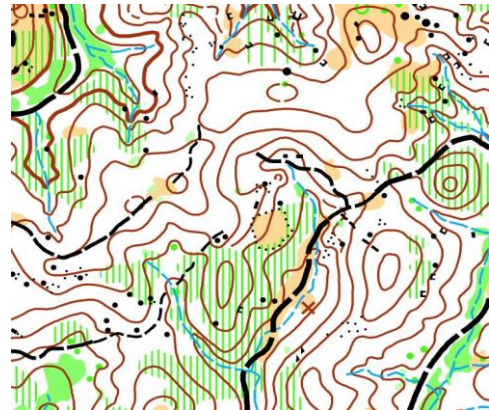
## TRANSPORTATION

Antalya International Airport is the nearest international airport to the competition area. Many countries have direct economic direct flights to Antalya. It is 11 km from the airport to the Event Center.

You may request private transfer from the airport from the organizers. Prices depend on the size of the vehicle and number of people. More details will follow in Bulletin 2.

Transfer from Event Center to Competition areas is free for MCO competitors and COMOF official participants. For other participants, the fee is 10 € per day, 30 € for all days.

## TERRAIN AND MAPS



Regions for MCO and WRE competitions will be newly mapped. Kumköy was used for Antalya O Days 2016 but will be extended to include a completely new region. Ekşili Gölet to be used for the Long Distance is a completely new region and has never been used for orienteering before.

## **TRAINING POSSIBILITIES**

Training camps at the similar areas can be organized in February 2017. Training maps of regions nearby are also available. You may request more information at [info@orienteering.org.tr](mailto:info@orienteering.org.tr)

### **PAYMENT:**

Payment for entry fees are to be paid to the Turkish Orienteering Federation:

**Account Holder:** Türkiye Oryantiring Federasyonu

**Currency:** EUR

**Bank & Branch:** Halk Bankasi, Anit Branch

Account Number: 411 - 58003876

IBAN: TR96 0001 2009 4110 0058 0038 76

BIC code: TRHBTR2AXXX

Payment may also be made in cash upon arrival. Please note that cash may only be accepted in Euros or Turkish Lira. The official exchange rate for the Euro will be considered in payment in Turkish Lira.

### **VISA INFORMATION**

Please check if you need a visa at <http://www.mfa.gov.tr/visa-information-for-foreigners.en.mfa>

All those countries which require a visa should let us know well ahead so that we may provide all necessary documents for you needed for visa. Please also notice that it is also possible to apply for a visa on-line at <https://www.evisa.gov.tr/en/>

### **CONTACT INFORMATION**

Turkish Orienteering Federation

Contact person: Sena Otlu, Event Secretary

[info@orienteering.org.tr](mailto:info@orienteering.org.tr)

Tel: +90 507 720 20 53